

## AAMI

CRES

*Certified Radiology Equipment Specialist*

- Up to Date products, reliable and verified.
- Questions and Answers in PDF Format.

### Full Version Features:

- 90 Days Free Updates
- 30 Days Money Back Guarantee
- Instant Download Once Purchased
- 24 Hours Live Chat Support

### For More Information:

<https://www.testsexpert.com/>

### • Product Version

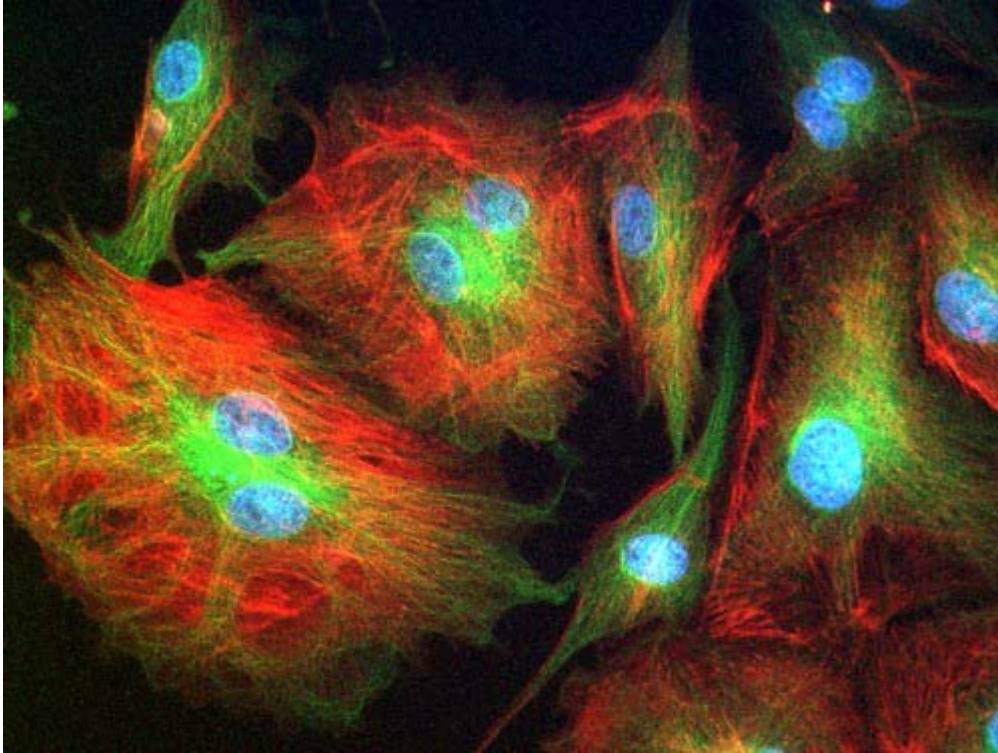
Visit us at <https://www.testsexpert.com/cres/>

---

# Latest Version: 6.0

## Question: 1

chemical compound that absorb/emit light of specific wavelengths; they are used to stain tissues, cells, or materials in a variety of analytical methods



- A. cyclotron
- B. fluorophores
- C. electron microscopy
- D. pixel

**Answer: B**

## Question: 2

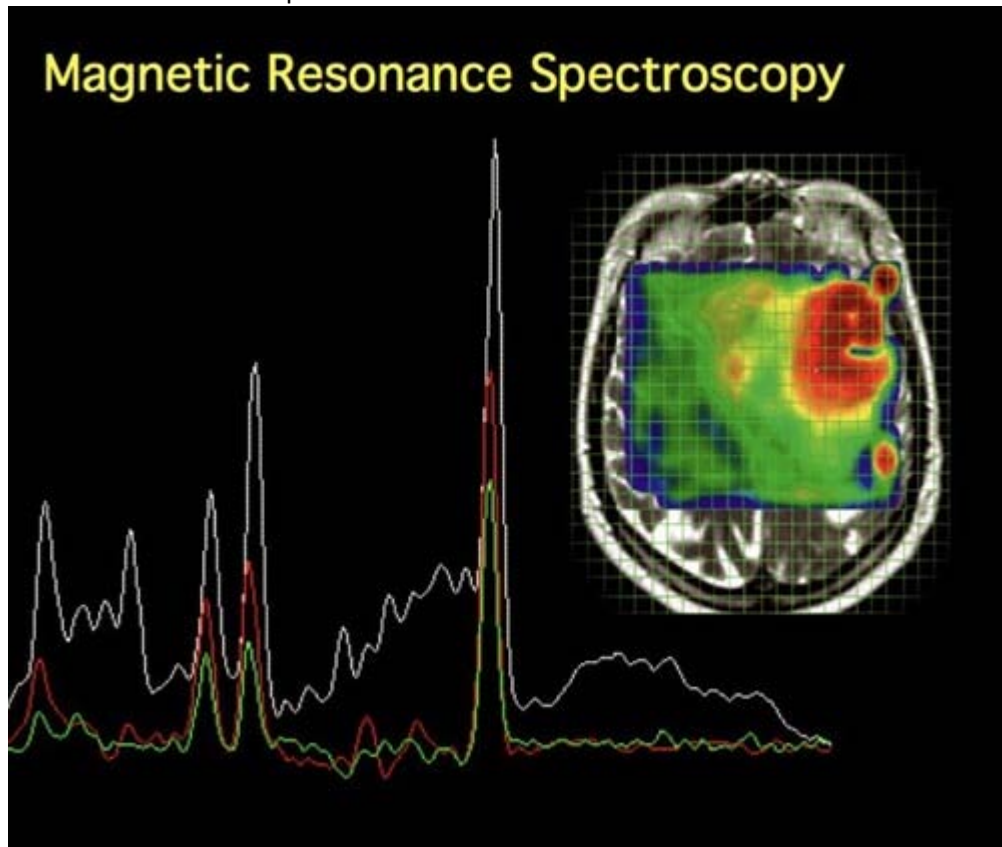
A device used to accelerate charged particles used to produce the isotopes used in PET imaging

- A. cyclotron
- B. radioactive molecule
- C. fluorophores
- D. confocal imaging

**Answer: A**

### Question: 3

similar to MRI but is a technique that uses the magnetic properties of cell nuclei to gain information about the biochemical qualities of the brain



- A. MRIs (magnetic resonance imaging)
- B. fMRIs (functional magnetic resonance imaging)
- C. MRS (magnetic resonance spectroscopy)
- D. PET (positron emission tomography) imaging

**Answer: C**

### Question: 4

to help

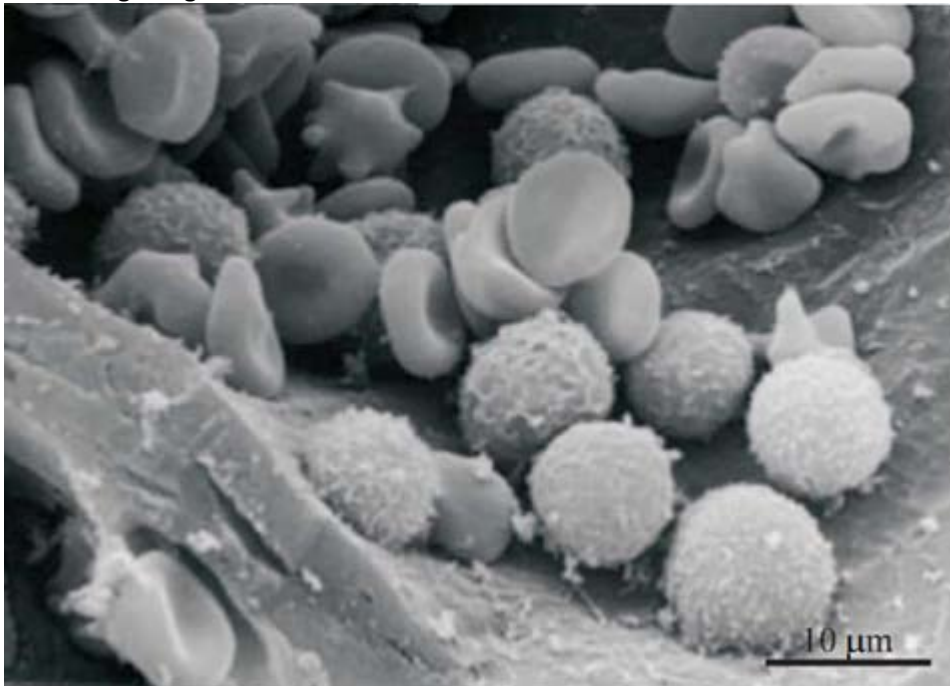
- A. pixel

- B. pet (positron emission tomography) imaging
- C. aid
- D. fmris (functional magnetic resonance imaging)

**Answer: C**

### Question: 5

uses electrons instead of light to create pictures of very small objects; the shorter wavelength of electrons gives greater resolution



**2**

- A. fluorophores
- B. electron microscopy
- C. cyclotron
- D. fluorophores

**Answer: B**

### Question: 6

in place of, rather than

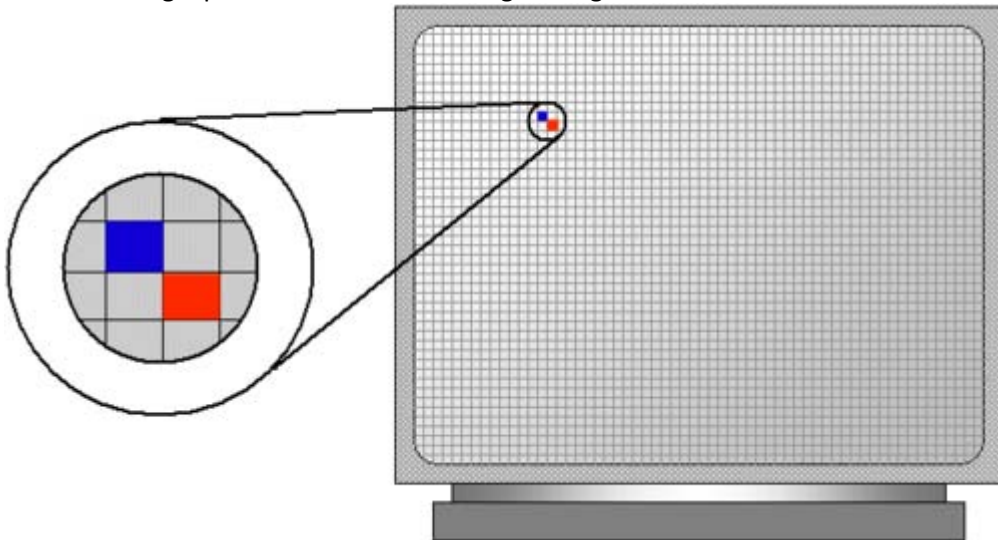
- A. digital camera
- B. confocal imaging
- C. instead of

D. modality

**Answer: C**

### Question: 7

Short for "picture element" is the smallest unit of a digital image; typically a tiny square or dot which contains a single point of the color of a larger image.



- A. fluorophores
- B. pixel
- C. digital camera
- D. gamma camera

**Answer: B**

### Question: 8

if an image is DIGITAL, it is produced by a computer and made up of pixels



- A. digital camera
- B. cyclotron
- C. gamma camera
- D. pixel

**Answer: A**

### Question: 9

is a technique that creates three-dimensional images of the body, usually by detecting radioactive molecules introduced into the bloodstream



- A. PET (positron emission tomography) imaging
- B. fMRIs (functional magnetic resonance imaging)
- C. SPECT (single photon emission computed tomography)
- D. MRIs (magnetic resonance imaging)

**Answer: C**

### Question: 10

a pattern or symptom that aids in medical diagnosis

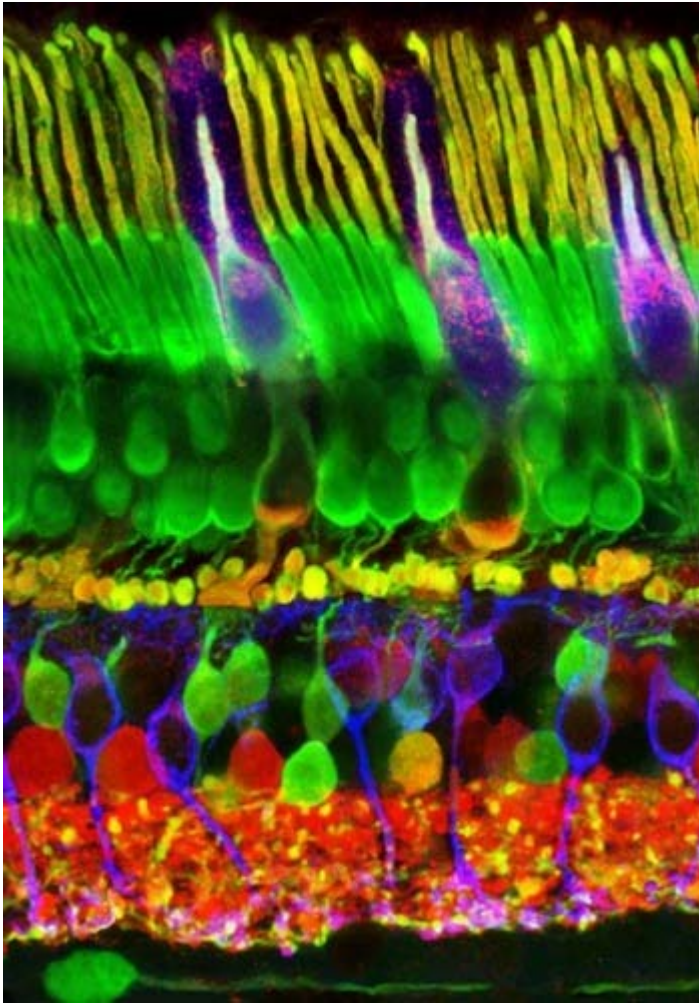
- A. cyclotron
- B. modality
- C. radioactive molecule
- D. confocal imaging

**Answer: B**

### Question: 11

is a type of microscopy that uses a pinhole technique to create high resolution images.





- A. digital camera
- B. confocal imaging
- C. cyclotron
- D. mris (magnetic resonance imaging)

**Answer: B**

## Question: 12

Certified Radiology Equipment Specialist

- A. FLUOROPHORES
- B. CRES
- C. PIXEL
- D. ELECTRON MICROSCOPY



**Answer: B**

### Question: 13

a device that produces images by reading radioactive substances injected into the body



- A. gamma camera
- B. confocal imaging
- C. digital camera
- D. pixel

**Answer: A**

### Question: 14

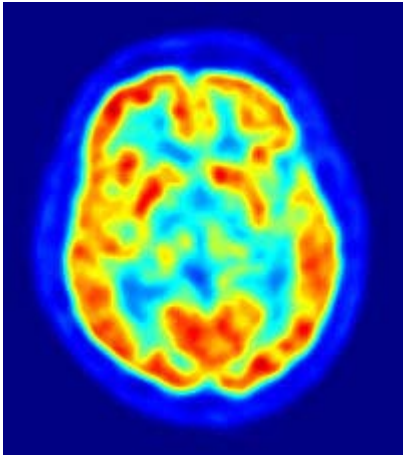
is an unstable molecule that releases radiation when it spontaneously decays

- A. gamma camera
- B. radioactive molecule
- C. cyclotron
- D. fluorophores

**Answer: B**

### Question: 15

is a technique that creates three-dimensional images of the body by detecting radioactive molecules that have been introduced in the body



- A. MRIs (magnetic resonance imaging)
- B. SPECT (single photon emission computed tomography)
- C. Fmris (functional magnetic resonance imaging)
- D. PET (positron emission tomography) imaging

<b>Answer: D</b>
------------------

For More Information – Visit link below:  
<https://www.testsexpert.com/>

16\$ Discount Coupon: **9M2GK4NW**

## Features:

■ Money Back Guarantee.....



■ 100% Course Coverage.....



■ 90 Days Free Updates.....



■ Instant Email Delivery after Order.....

