

Latest Version: 7.0

Question: 1

A Virtual Server uses an iRule to send traffic to pool members depending on the URI. The BIG-IP Administrator needs to modify the pool member in the iRule.

Which event declaration does the BIG-IP Administrator need to change to accomplish this?

- A. CLIENT_ACCEPTED
- B. HTTP_RESPONSE
- C. HTTP_REQUEST
- D. SERVER_CONNECTED

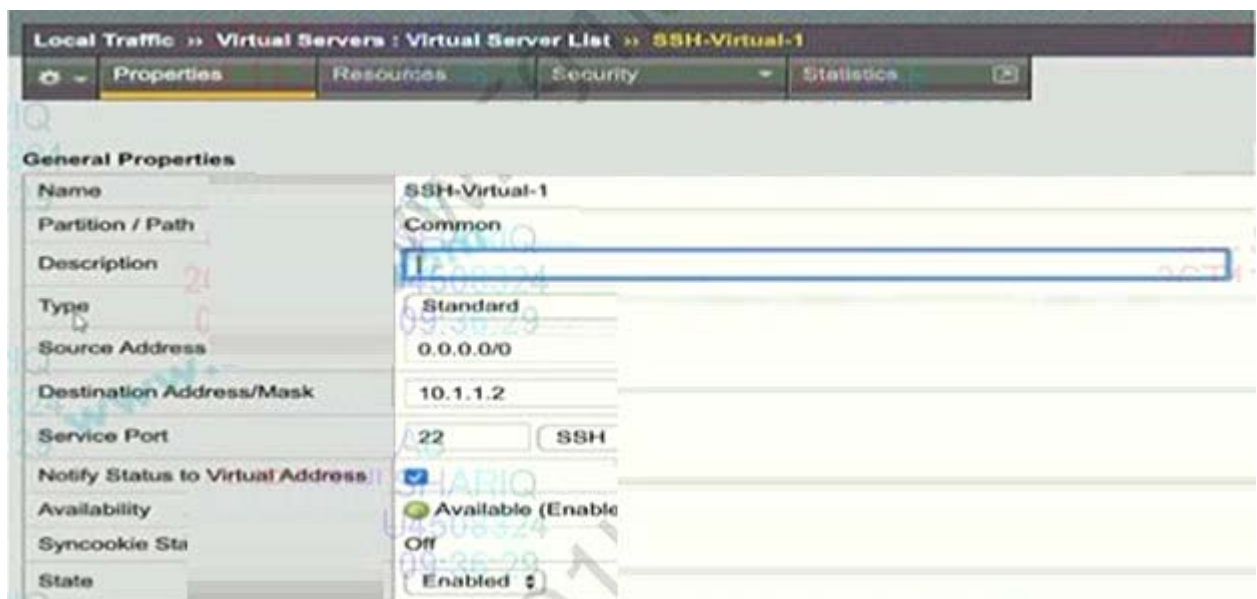
Answer: C

Explanation:

According to the URI distribution is the category of HTTP requests, need to trigger HTTP_REQUEST event.

Question: 2

Refer to the exhibit.





A BIG-IP Administrator creates a new Virtual Server to load balance SSH traffic. Users are unable to log on to the servers.

What should the BIG-IP Administrator do to resolve the issue?

- A. Set Protocol to UDP
- B. Set HTTP Profile to None
- C. Set Source Address to 10.1.1.2
- D. Set Destination Addresses/Mask to 0.0.0.0/0

Answer: B

Question: 3

A BIG-IP Administrator uses backend servers to host multiple services per server. There are multiple virtual servers and pools defined, referencing the same backend servers.

Which load balancing algorithm is most appropriate to have an equal number of connections on each backend server?

- A. Least Connections (member)
- B. Least Connections (node)
- C. Predictive (member)
- D. Predictive (node)

Answer: B

Explanation:

The same set of servers provides multiple services, that is, using different ports to provide different services at the same time. The stem requirement is based on server connection balancing, not server + port, so it is node.

Question: 4

The BIG-IP Administrator needs to perform a BIG-IP device upgrade to the latest version of TMOS. Where can the administrator obtain F5 documentation on upgrade requirements?

- A. AskF5
- B. DevCentral
- C. Bug Tracker
- D. iHealth

Answer: A

Question: 5

A BIG-IP Administrator makes a configuration change to the BIG-IP device. Which file logs the message regarding the configuration change?

- A. /var/log/messages
- B. /var/log/audit
- C. /var/log/user.log
- D. /var/log/secure

Answer: B